

Fixed castor EDDF 300 EESK

Extra Heavy Duty Series EDD - Wheel ES

-30 °C - +80 °C

+++
swivels easily

++
wear resistant

+++
shock proof

+++
floor protective

++
weather proof

Wheel



Tread: vulcanized elastic solid rubber tyre 73±5 Shore A

Wheel Center: Strong steel welded construction - zinc plated

Fork



For applications where a super strong and durable caster is required,
one tapered roller and one axial ball bearing,
dust protection ring,
very strong integrated Kingpin,
locked nut, grease nipple, wheel axle bolted,
finish – painted

Fixed castor	Wheel-Ø A x width B mm: 300x100+100
--------------	-------------------------------------

Load Capacity kg:	2400
-------------------	------

Load capacity tested according to EN 12530 and EN 12527	
---	--

Overall height H mm:	400
----------------------	-----

Dimension of top plate TP mm:	255x205
-------------------------------	---------

Hole spacing HS mm:	210x160
---------------------	---------

Hole-Ø HD mm:	19
---------------	----

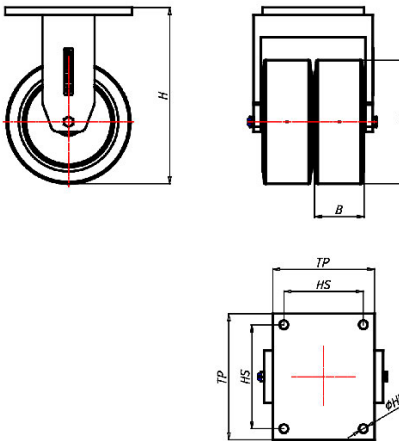
Wheel bearing:	Ball bearing
----------------	--------------

Advantages

- ✓ excellent running performance
- ✓ low rolling resistance
- ✓ silent in motion
- ✓ high abrasion resistance
- ✓ high load capacity

©Copyright 2024 Rollenbau GmbH, www.rollenbau.at 20.05.2024

ROLLENBAU



Applications

- Heavy duty dollies
- Trash container trucks
- Machinery moving dollies
- Racks